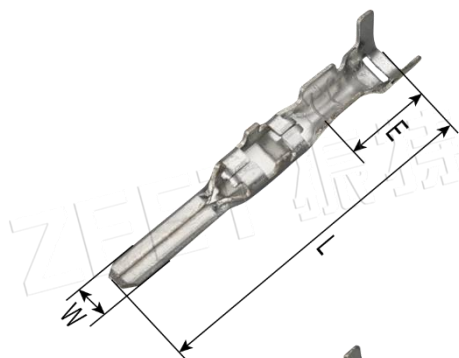


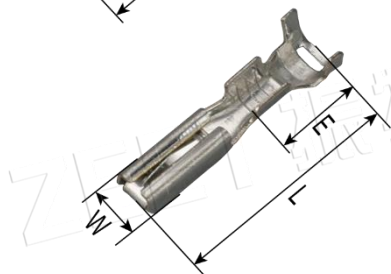
## 2.2 连接器系列

### 2.2 Series

A



B



### 技术参数 Specifications

使用线数(Hole count): 2 3 4 6 9

温度范围 (Temperature range):  $-25^{\circ}\text{C} \sim 85^{\circ}\text{C}$

额定电压 (Rated voltage): 300V. AC/DC

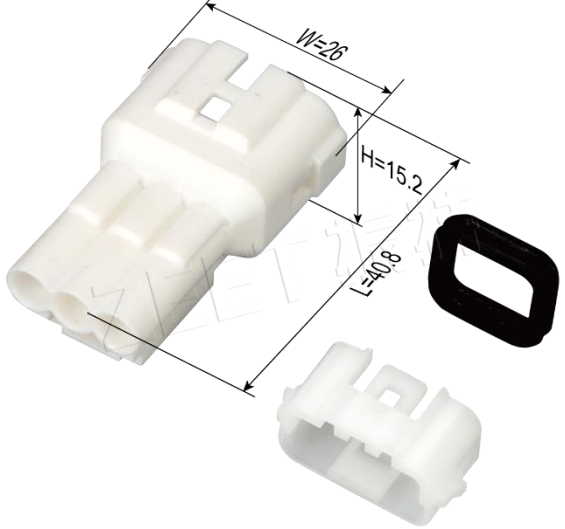
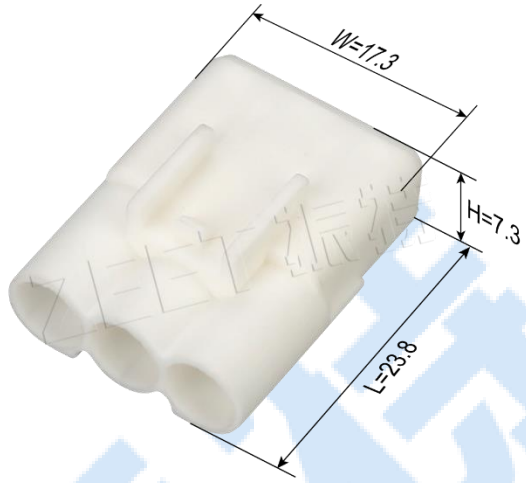
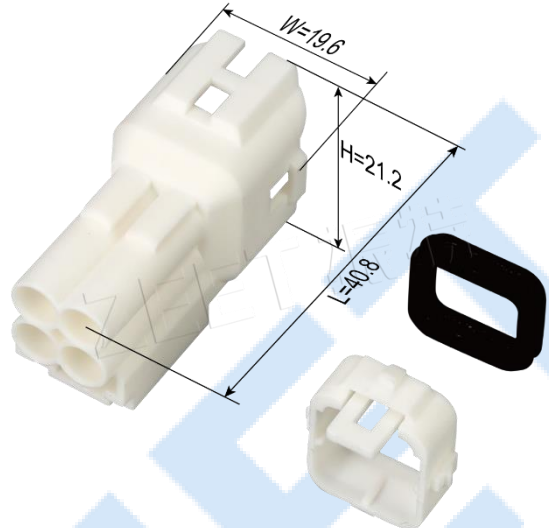
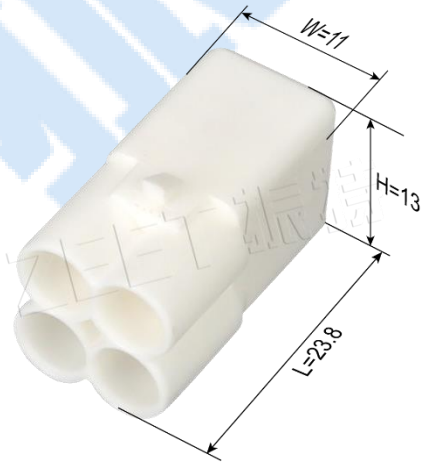
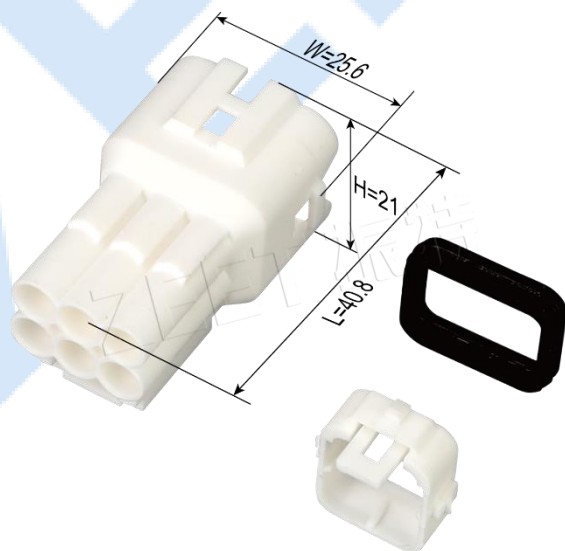
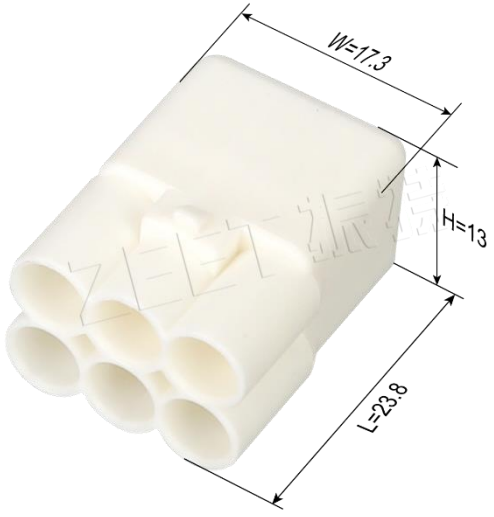
额定电流 (Rated current): 5A

### 端子 Terminal

型号 Type	图号 Pic	压线范围 Wire Range		厚度 Thickness	材质 Material	尺寸 Dimension (mm)			对照表 Comparison No.	备注 Remark
		AWG#	mm <sup>2</sup>			L	W	E		
ZT-2.2PT	A	18~16	0.7~1.2	0.3	黄铜	24	2.2	7.2	插头	
ZT-2.2RT	B	18~16	0.7~1.2	0.25	黄铜	16.5	3	7.2	插座	

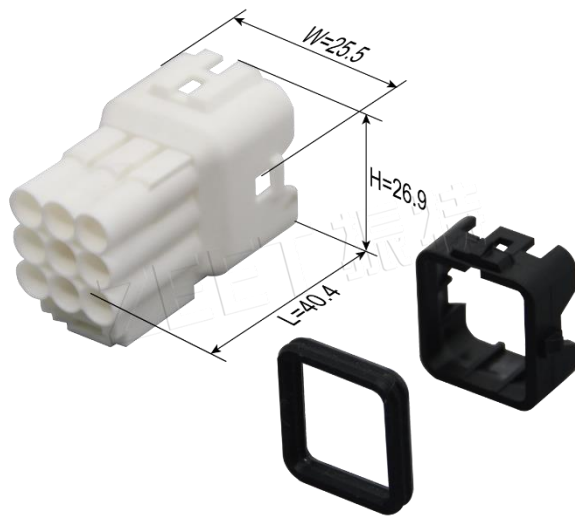
### 塑料件 Plastic parts

线数 Hole count	插头 Plug for female terminal	插座 Receptacle for male terminal
2	<p><b>DJ7021-2.2-11</b></p>	<p><b>DJ7021-2.2-21</b></p>

3	<p><b>DJ7031-2.2-11</b></p>  <p>W=26 H=15.2 L=40.8</p>	<p><b>DJ7031-2.2-21</b></p>  <p>W=17.3 H=7.3 L=23.8</p>
4	<p><b>DJ7041-2.2-11</b></p>  <p>W=19.6 H=21.2 L=40.8</p>	<p><b>DJ7041-2.2-21</b></p>  <p>W=11 H=13 L=23.8</p>
6	<p><b>DJ7061-2.2-11</b></p>  <p>W=25.6 H=21 L=40.8</p>	<p><b>DJ7061-2.2-21</b></p>  <p>W=17.3 H=13 L=23.8</p>

9

### DJ7091-2.2-11



### DJ7091-2.2-21

